



aristide

# Teddy

A Teddy rug brings texture and warmth into the living area, creating a warm and cosy atmosphere.























# Maze

A Maze rug brings an accent to your interior.  
A well-chosen rug makes your interior more pleasant and cosy.















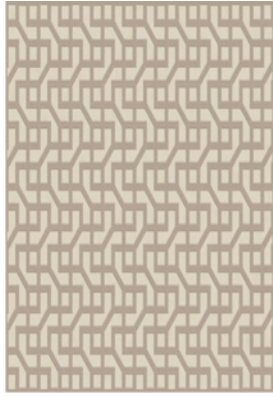






# Overview collection





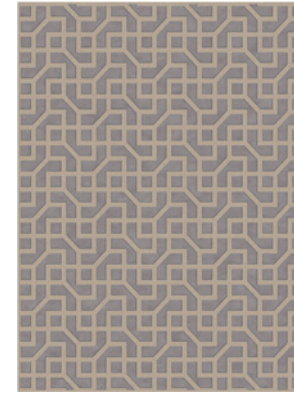
size 200cm x 290cm

size 280cm x 380cm

## Maze 206 Natural

Composition  
Pile  
Production

92% WO 8% PA  
100% VI  
Made in Belgium



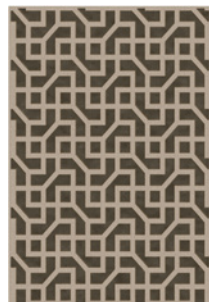
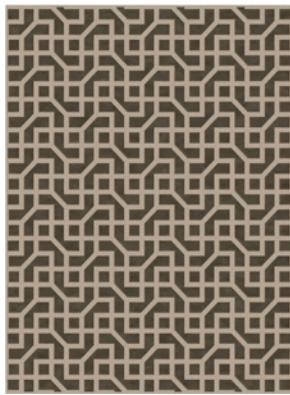
size 200cm x 290cm

size 280cm x 380cm

## Maze 150 Slate

Composition  
Pile  
Production

92% WO 8% PA  
100% VI  
Made in Belgium



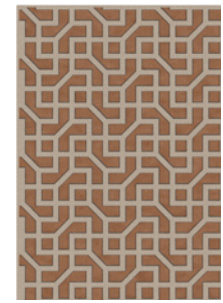
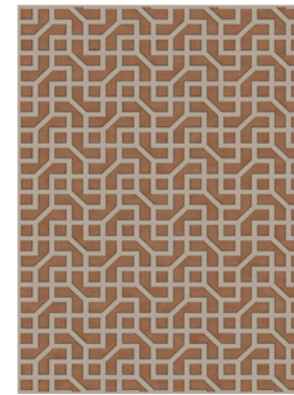
size 200cm x 290cm

size 280cm x 380cm

## Maze 270 Chocolate

Composition  
Pile  
Production

92% WO 8% PA  
100% VI  
Made in Belgium



size 200cm x 290cm

size 280cm x 380cm

## Maze 365 Rust

Composition  
Pile  
Production

92% WO 8% PA  
100% VI  
Made in Belgium





size 200cm x 300cm  
size 280cm x 380cm

### Teddy 205 Off-white

Composition 100% Wool  
Back 100% Jute  
Production Made in Belgium



size 200cm x 300cm  
size 280cm x 380cm

### Teddy 220 Latte

Composition 100% Wool  
Back 100% Jute  
Production Made in Belgium



size 200cm x 300cm  
size 280cm x 380cm

### Teddy 240 Sand

Composition 100% Wool  
Back 100% Jute  
Production Made in Belgium



size 200cm x 300cm  
size 280cm x 380cm

### Teddy 130 Ash

Composition 100% Wool  
Back 100% Jute  
Production Made in Belgium



# Onderhoud

Regelmatig stofzuigen. Bij het eerste gebruik is het volstrekt normaal dat grote restvezels los komen. Bij vlekken onmiddellijk met een vochtige doek deppen op de vlek (niet wrijven!). Professionele tapijtreiniging of droogkuis aanbevolen.

# Entretien

Aspirer régulièrement. Lorsqu'un tapis est neuf, il est tout à fait normal qu'il perd ses excès de matière sous forme de peluche. En cas de taches, tamponnez immédiatement avec un chiffon humide (ne pas frotter!). Nettoyage de tapis professionnel ou nettoyage à sec recommandé.

# Maintenance

Regular vacuuming. At first use it is completely normal that large residual fibers come loose. In case of stains, dab the stain immediately with a damp cloth (do not rub!). Professional carpet cleaning or dry cleaning recommended.

# Pflegeanleitung

Regelmäßig staubsaugen. Beim ersten Gebrauch ist es völlig normal, dass es mehrere lose Fasern gibt. Bei Flecken unmittelbar mit einem feuchten Tuch auf die Flecken tupfen (nicht reiben). Es wird eine professionelle Teppichreinigung oder eine chemische Reinigung empfohlen.





[www.aristide.be](http://www.aristide.be)